



May 2017

Dear Applicant,

Thank you for your interest in the post of **Sessional Sexual Health Outreach Worker (Kent)**

Please find enclosed Recruitment Pack, which contains:

- Job Description
- Person Specification
- Application Form (separately attached)
- Guidance Notes for Applicants (separately attached)
- Monitoring Form (separately attached)
- METRO Centre Equal Opportunities Policy Statement (separately attached)

Please note that CVs will not be considered as part of your application, we will be short-listing from fully filled out application forms only.

We are receiving applications on an ongoing basis, please send:

- By post or hand to Human Resources Manager, METRO, N206 Vox Studios, 1-45 Durham Street, London SE11 5JH
- OR by email to [recruitment@metrocharity.org.uk](mailto:recruitment@metrocharity.org.uk). If applying by email, you should include your full name in the message title and your email and attachments must not exceed 800kB in size.

For further information regarding this post please contact, **Luis Ingram** ([luis@metrocharity.org.uk](mailto:luis@metrocharity.org.uk) – **020 8305 5000**).

We look forward to hearing from you.

Best wishes,

A handwritten signature in black ink, appearing to read "Greg Ussher". The signature is fluid and cursive, with a small flourish at the end.

Greg Ussher

Chief Executive Officer



## **METRO Sexual Health Outreach Worker** *GET IT* Condom Distribution Scheme

**CONTRACT: Sessional**

**PAY: £11.10 P/H**

**HOURS: Varied by Week**

**LINE MANAGED BY: Kent GET IT Programme Lead**

**EMPLOYED BY: METRO**

**LOCATION: METRO Offices, Sites across Kent**

**JOB DESCRIPTION:**

### ***GETIT* Information**

METRO has been jointly commissioned with Malling Health to deliver the Kent Condom Distribution Scheme on behalf of Kent County Council. The Condom Distribution Scheme gives free condoms, information and support to young people age 13-19 via distribution sites, online ordering and outreach to communities.

### **Job Summary**

METRO are seeking committed, motivated, creative and enthusiastic individuals to work within a team of Outreach Workers to promote *GET IT*, register young people on to the scheme and promote local Contraceptive and Sexual Health Services.

Outreach will be conducted in a number of settings depending on the need. These could be educational settings, youth settings, community events, sports settings, clubs and pubs, and local green spaces. Outreach workers will target vulnerable young people, such as Looked After Children (LAC), those who are NEET, those who come from areas of high deprivation and high need, and those with other increased risk factors. Outreach workers must therefore be able to employ a flexible, creative, appropriate, and non-judgemental way of working with a variety of young people from diverse backgrounds.



The Outreach team will be expected to deliver accurate information to young people in regards to sexual health and contraceptive and where to access support locally to them. They will also have a responsibility of child protection ensuring young people under the age of 16 have been risk assessed during the registration process.

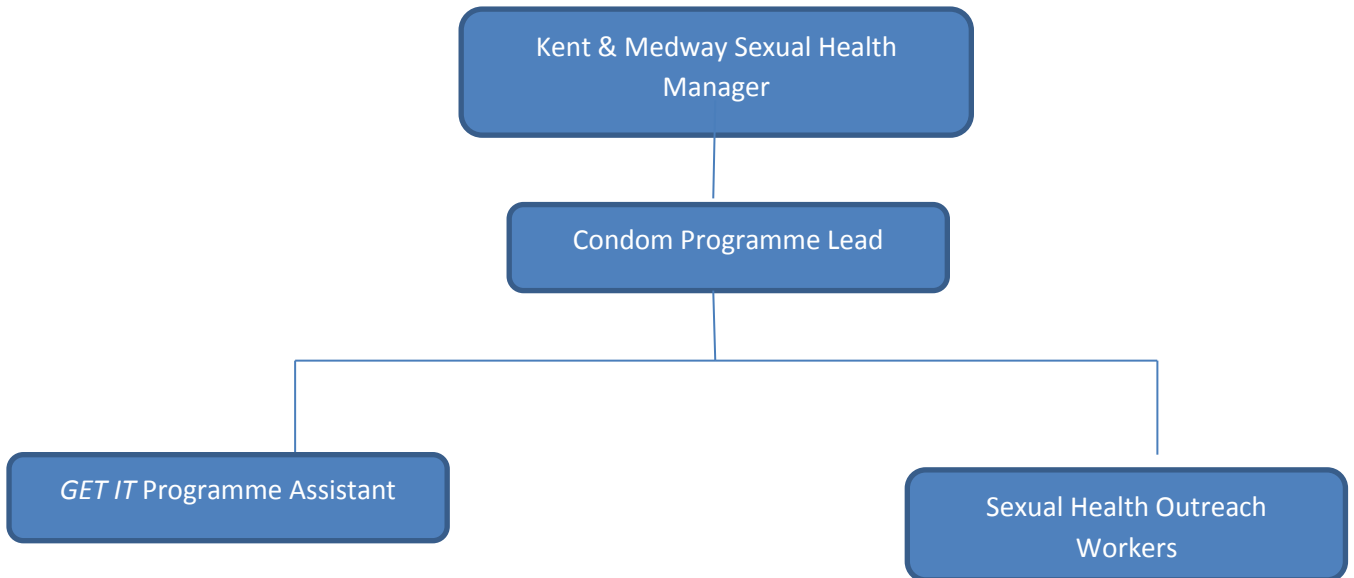
### **Job Duties**

1. To promote the Get It! Scheme amongst a broad range of young people living in Kent, fully explaining the scheme and how to access condoms
2. To accurately assess the age of young people registering for Get It!
3. To provide a sexual health intervention with every registration undertaken
4. To provide a non judgmental service to all young people
5. To comply with METRO procedures around client confidentiality, information governance, and data protection
6. To have a clear understanding of Safeguarding and Child Sexual Exploitation and to follow METRO Safeguarding procedures
7. To be able to deliver Get It! training to big and small groups in a number of settings
8. To signpost young people to their nearest contraceptive and sexual health services
9. To meet daily targets
10. To comply with paperwork requirements as established by the Programme Lead
11. To assist with the stocking for, setting up, and dismantling of displays for events
12. To represent the wider METRO agenda if required
13. To be punctual, prepared and professional at all times ensuring appropriately dressed for the setting
14. To deliver training if required
15. To wear METRO Identification badges and uniform at all times when working

### **Other Duties**

1. To adhere to METRO Centre policies and procedures at all times
2. To meet the requirements and expectations of the Get It! Programme Lead
3. Any other duties that METRO feels are appropriate to this role
4. To work flexible, often during unsociable hours

**Staff Structure and Budget Responsibilities.**



This post has no staff supervision or budget responsibilities.



**METRO GET IT- Sexual Health Outreach Worker**

**Person Specification**

**Knowledge and Experience**

<b>Knowledge and Experience</b>	<b>Essential or Desirable</b>	<b>Application Form, Interview or Both</b>
Experience of working with young people aged 13-19	Essential	Application / Interview
Experience and understanding of working with YP in a variety of settings	Desirable	Application / Interview
An understanding of current social, economic issues, health inequalities that affect young people, particularly those in Kent	Essential	Application / Interview
Being able to effectively communicate sexual health information to a number of audiences including young people, parents and professionals	Essential	Application / Interview
Understanding of boundaries, confidentiality, information governance, data protection, and child protection / safeguarding within the field of Youth Work.	Essential	Application / Interview
Experience of working in the field of sexual health	Desirable	Application / Interview
Understanding of the issues which impact the sexual health of young people in Kent	Desirable	Application / Interview
Knowledge of Kent districts and the issues affecting each district.	Desirable	Application/Interview



## Skills and Abilities

Skills and Abilities	Essential or Desirable	Application, Interview or Both
Confident and able to deliver information to small and big groups	Essential	Application/Interview
Ability and willingness to work as part of a team	Essential	Application/Interview
Ability able to deliver the same information in a number of creative ways	Essential	Application/Interview
The ability to ensure METRO policies are implemented during all sessions	Essential	Application/Interview
Ability to record different types of information reliably, and to communicate it effectively	Essential	Application/Interview
A flexible approach to work including working evenings and weekends	Essential	Application and interview
Commitment and proactive approach too equality issues	Essential	Application/Interview
The ability to communicate with young people and parents regarding sensitive issues.	Essential	Application/Interview
The ability to encourage engagement from a wide range of young people	Essential	Application/Interview
Be able to drive and have access to a car	Desirable	Application